

2023학년도 동계 해외파견



단기연수 프로그램 설명회

Global Engagement Center

Copyright. All rights reserved.

선발 전형

■ 1차 서류 전형 : 파견 기본 자격 심사

- ▷ 가점 - 설명회 참가, 외국어점수, 글로벌프로그램 참가
이력 등
- ▷ 감점 - 오기입, 누락, 제출기한초과 등

■ 2차 면접 전형 : 태도 심사

- ▷ 가점 - 준비성 등 ※ 지원자 평균 + α 외국어능력을 요함
- ▷ 감점 - 지각 등 ※ No Show는 자동탈락

지원자격

- 직전 학기 성적 30 이상
- 현재 재학(등록) 상태 = 휴학생 지원 불가
- 현재 7학기 이내인 자 (2024년 2월 졸업예정자 또는 졸업유보자 지원 불가)
- 해외 체류에 결격 사유가 없는 자
- 학칙에 의거 징계받은 사실이 없는 자
- 기존 국제화 프로그램 단순 취소 사실이 없는 자

태도 면접 심사 기준

- 학업 및 생활 전반에 있어 성실한 사람
- 정신적 · 신체적으로 건강한 사람
- 외국에서의 생활을 혼자서도 해 낼 수 있는 독립심이 있는 사람
- 동시에 사회성 지닌 사람 (그룹 활동에 폐를 끼치지 않는 성품)
- 품행이 글로벌 기준에 부합되는 사람
- 해외 문화를 수용할 수 있는 긍정적 자세를 가진 사람

등등

학생 선발

“뚜렷한 **학업 목표**를 가지고
한림대학교를 **대표**할 수 있는 **인성**을 지닌” 학생



유의사항

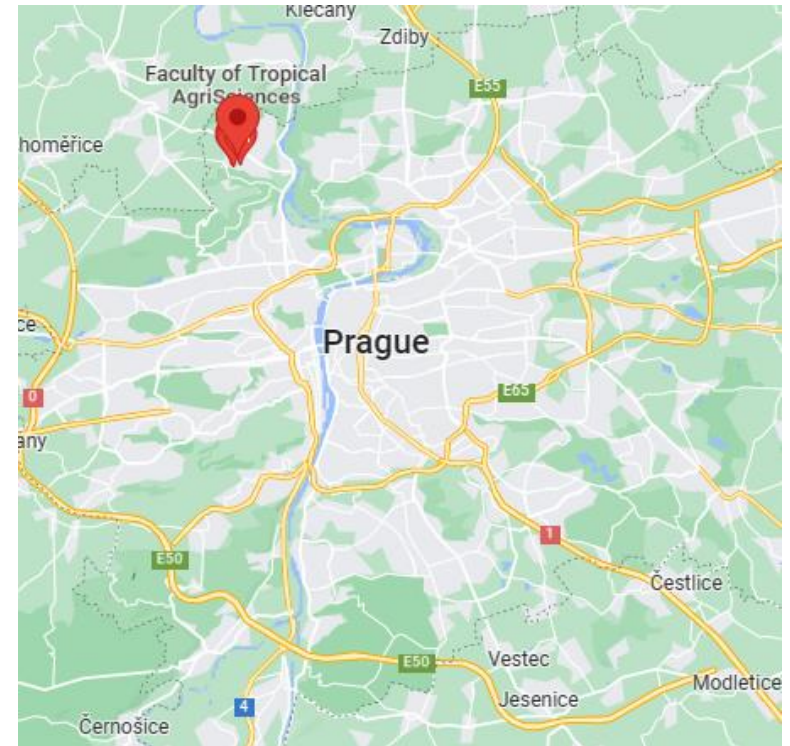
- **어학 실력 향상 이상의 목표**
→ **해외취업 준비 및 글로벌 인재 양성**
- **프로그램 주관 기관은 한림대가 아닌 해외 교류
파견대학이므로, 세부사항 확인 필요 & 시간 소요**
- **학교에서 다 알아서 해줄 것이라는 생각은 금물,
독립적인 자세 필요: 파견대학 온라인 신청서 접수 및
비자 업무 등 ※ 개인정보보호법상 본인이 직접 처리**

[프로그램 설명]

체코 3주 Czech Univ. of Life Sciences Prague



Czech
University
of Life Sciences
Prague



[프로그램 설명]

체코 3주 Czech Univ. of Life Sciences Prague

일정표

Mon 8.1.24	Arrive in Prague 18:00 Dinner			
	8:00-9:00	9:15 - 11:45	12:00-13:00	13:15-15:15
9.1.24 Tue	breakfast	Welcome session and orientation on campus, Intro to Czech culture	Lunch	Prague walk + free evening
10.1.24 Wed	Excursion: South Bohemia breakfast 7:00, Departure 8:00, Budvar: 11:00, Lunch 12:00, Cesky Krumlov 15:00, Dinner Šatlava			
11.1.24 Thu	breakfast	Business English, Motivation letter writing	Lunch	Employer branding
12.1.24 Fri	breakfast	Qualities companies seek in candidates	Lunch	Preparing for when seeking jobs in global company
13.1.24 Sat	Free program			
14.1.24 Sun	Free program			
15.1.24 Mon	breakfast	Job interview - English language	Lunch	Job searching, Linked-in
16.1.24 Tue	breakfast	Employee Sourcing and Recruitment	Lunch	Univesity brewery visit
17.1.24 Wed	Excursion: Karlovy Vary breakfast 7:00, Departure 7:30, Mosser: 9:30 a 10:00, Becherovka: 11:00 Lunch: 12:00, 13:00-15:00 Karlovy Vary Walk			
18.1.24 Thu	breakfast	Business Attitude	Lunch	Trends in the Czech and EU job market
19.1.24 Fri	Free program			
20.1.24 Sat	Free program			
21.1.24 Sun	Free program			
22.1.24 Mon	breakfast	Job interview preparation	Lunch	Job interview simulation
23.1.24 Tue	Excursion: company visit breakfast 8:00, Departure 8:30, company visit: 9:30, Lunch 13:00			
24.1.24 Wed	breakfast	Human resources management	Lunch	Personnel management
25.1.24 Thu	breakfast	Labour market	Lunch	Managing people in organizations
26.1.24 Fri	breakfast	Role of Culture in International Business	Lunch	Free time + closing ceremony
27.1.24 Sat	Departures from Prague			

[납부 방법 안내]

체코 3주 Czech Univ. of Life Sciences Prague

구분	금액	비고
계절학기 비용 납부	150,000원	한림대에 납부, 2학점
프로그램 비용 납부	10~15명: 65,000 CZK 15~20명: 60,000 CZK	파견대학에 납부, 온라인 결제
항공권 구매	2,200,000 원 예상	개인 결제 but 단체 일정
보험료 납부	50,000원 예상	필수, 개인 결제
기타 개인 비용 (납부X)	600,000원 예상	개인소비성향에 따라 상이함

[기타 유의/안내 사항]

체코 3주 Czech Univ. of Life Sciences Prague

- 프로그램비에 공항-캠퍼스간 이동, 견학(문화체험), 기업탐방 및 시내 이동 교통편 비용 포함 (현지 도착 후 교통패스 배부)
- 영문 코로나 예방접종확인서 (국제공인 방역패스) 필요

🏠 > [코로나19 예방접종증명서 방역패스 유효기간 안내](#)

코로나19 예방접종증명서 방역패스 유효기간 안내

- ▣ '23.10.23(월) 기준 유효한 2차접종(안센접종자는 1차접종) 증명서는 '23.4.26부터 '23.10.8까지 접종받은 경우입니다.
- ▣ 다만, '21.7.6 이전에 접종완료한 경우에는 '22.1.2까지 유효하며, '22.1.3에 일괄 만료됩니다.

※ 코로나19 예방접종증명서의 방역패스 유효기간은 2차접종(안센접종자는 1차접종)은 접종 후 14일부터 180일까지, 3차(부스터)접종은 접종 즉시 인정됩니다.
※ 코로나19 예방접종증명서 방역패스 유효기간은 18세 이상('03.12.31. 이전 출생자)에게만 적용되며,
12~17세 청소년('04.1.1.~'09.12.31. 출생자)는 2차접종 후 14일이 경과된 날부터 유효기간 만료일 없이 접종증명 효력이 인정됩니다.

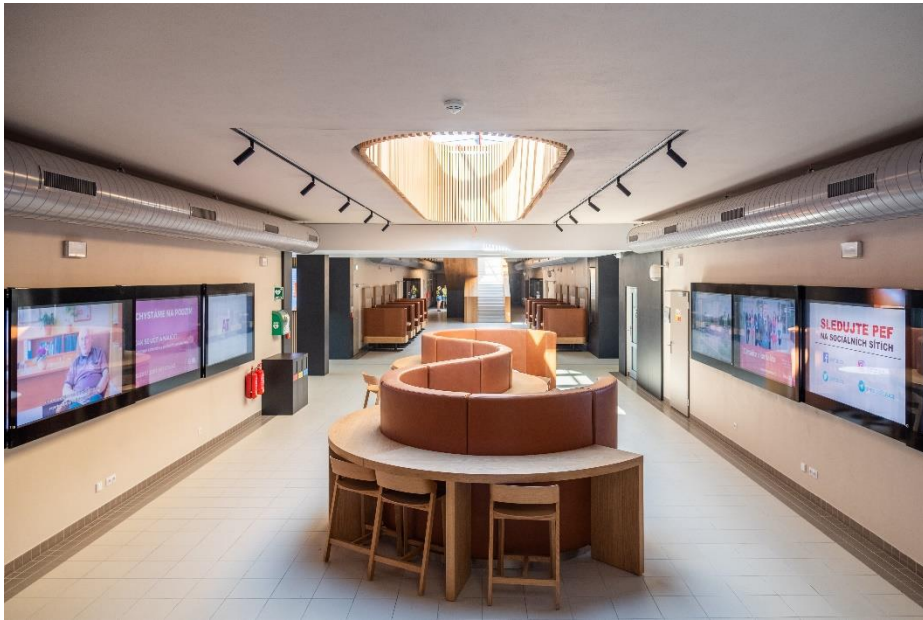
[파견대학 정보] Czech Univ. of Life Sciences Prague

캠퍼스 전경



[파견대학 정보] Czech Univ. of Life Sciences Prague

건물 내부



[파견대학 정보] Czech Univ. of Life Sciences Prague

기숙사



[프로그램 장단점]

체코 3주 Czech Univ. of Life Sciences Prague

단점	장점
<ul style="list-style-type: none">- Customized Program (한림대 학생만으로 이뤄진 반 운영)- 비싼 유럽행 항공료	<ul style="list-style-type: none">- 아름다운 도시, 유럽 생활 경험- (지역 대비) 가성비 좋은 참가비- (필리핀에 비해) 훌륭한 시설- 어학연수만이 아닌, 해외취업 준비 프로그램 (기업탐방 등)- 현지 대학 학기 중, 일상 공유 기회

[프로그램 설명]

필리핀 4주 De La Salle Araneta University



[프로그램 설명]

필리핀 4주 De La Salle Araneta University

일정표 [일반연수]

Dec 23, 2023 – Jan 20, 2024						
SUNDAY	MONDAY	TUESDAY	WEDNESDAY	THURSDAY	FRIDAY	SATURDAY
						12/23 Arrival
24 Opening Cellphone	25 Shopping Currency Change	26 Level test Welcome Ceremony	27 Regular Class Start	28 Business English	29 Weekly test Business English	30 Mindoro Fieldtrip
31 Mindoro Fieldtrip	1/1 Mindoro Fieldtrip	2 Voca test Business English	3 Business English	4 Weekly test Job Simulation SGC Output 01	5 Manila tour	6 Pagsanjan fall tour
7	8 Voca test Oral Presentation	9 Oral Presentation	10 Oral Presentation	11 SGC Output 02	12 Weekly test	13
14	15 Voca test Oral Presentation	16 Oral Presentation	17 Presentation Day	18 SGC Output 03 Presentation Day	19 Final test Graduation	1/20 Departure

[프로그램 설명]

필리핀 4주 De La Salle Araneta University

Regular Curriculum (8hrs/ day)

Class	Class Size	Class Hours
Individual	1:1	3hrs/day
Small Group	1:5	2hrs/day
Big Group	1:10	2hrs/day
Micro-learning		1hr/day

- *Each student is assigned to various class groupings - individual, small group or big group.*

Subject Titles

- **Total:** 6 Subjects **Class hours:**160 hours
(including orientation, entry level test, graduation and Philippine legal holidays)

Class Types	Subject Titles	Class Hours
One on One 1,2	Power Speaking	40 hours of Individual Class
One on One 3	Practical Writing	20 hours of Individual Class
SGC	Current Issues	20 hours of Small Group Class
SGC	Business English and Presentation	20 hours of Small Group Class
BGC	Effective Listening	20 hours of Big Group Class
BGC	Speaking skills for TOEIC	20 hours of Big Group Class
	Micro-learning	20 hours of self-study

[프로그램 설명]

필리핀 4주 De La Salle Araneta University

Daily Schedule

Time	Schedule	Time	Schedule
08:00-08:50	Breakfast	13:50-14:00	Proceed to DLSAU-LLC
08:50-09:00	Proceed to DLSAU-LLC	14:00-14:50	5th Class
09:00-09:50	1st Class	15:00-15:50	6th Class
10:00-10:50	2nd Class	16:00-16:50	7th Class
11:00-11:50	3rd Class	17:00-17:50	Micro-learning*
12:00-12:50	4th Class	18:00-19:00	Dinner
12:50-13:50	Lunch	22:00d-22:20	Roll Call

10-minute break in between the classes

Self-learning time (19:00-21:50 / 22:20-02:00): Monday-Friday (Review/Preparation/Assignment)

**Micro-learning schedule is flexible*

※ 90% 이상 출석률 중요! (2회 지각은 1회 결석 처리)

[납부 방법 안내]

필리핀 4주 De La Salle Araneta University

구분	금액	비고
계절학기 비용 납부	150,000원	한림대에 납부, 2학점
프로그램 비용 납부	일반연수 1,920,000원 + 인턴쉽 +670,000원	파견대학에 납부, 온라인 결제
항공권 구매	600,000 원 예상	개인 결제 but 단체 일정
보험료 납부	50,000원 예상	필수, 개인 결제
기타 개인 비용 (납부X)	500,000원 예상	개인소비성향에 따라 상이함

[프로그램 설명] 필리핀 인턴쉽

Caloocan City Hall (관공서)



전공에 따라 업무 배치
단, 회계 및 보건행정 분야 제외



[프로그램 설명] 필리핀 인턴쉽

Swiss-Bel Hotel (Hospitality)



마케팅,
프론트,
F&B,
객실

로테이션



[프로그램 설명] 필리핀 인턴쉽

Our Lady of Fatima University Hospital [주요분야 간호학]



[프로그램 설명] 필리핀 인턴쉽

Manila Central University Hospital

[주요분야: 임상병리학, 약학, 의료기술, 물리치료학]



[프로그램 설명] 필리핀 인턴쉽

De La Salle University 부속 초중고 학교

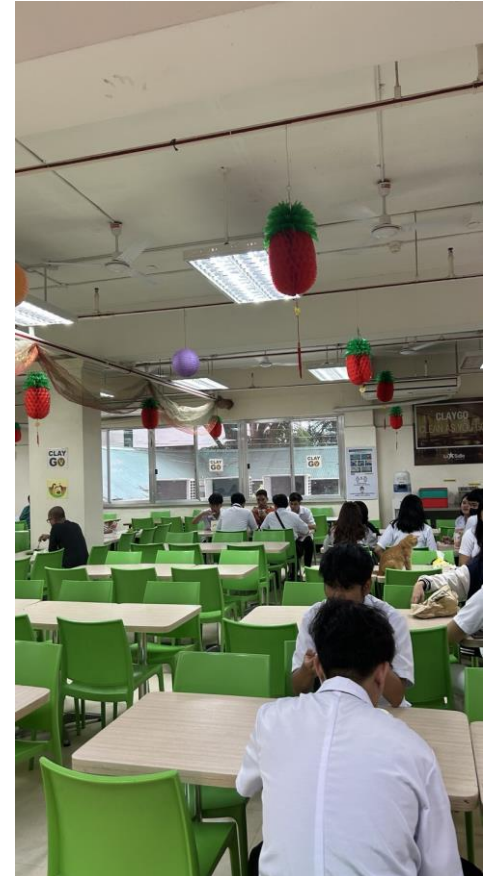


수업조교

[대학 정보]

De La Salle Araneta University

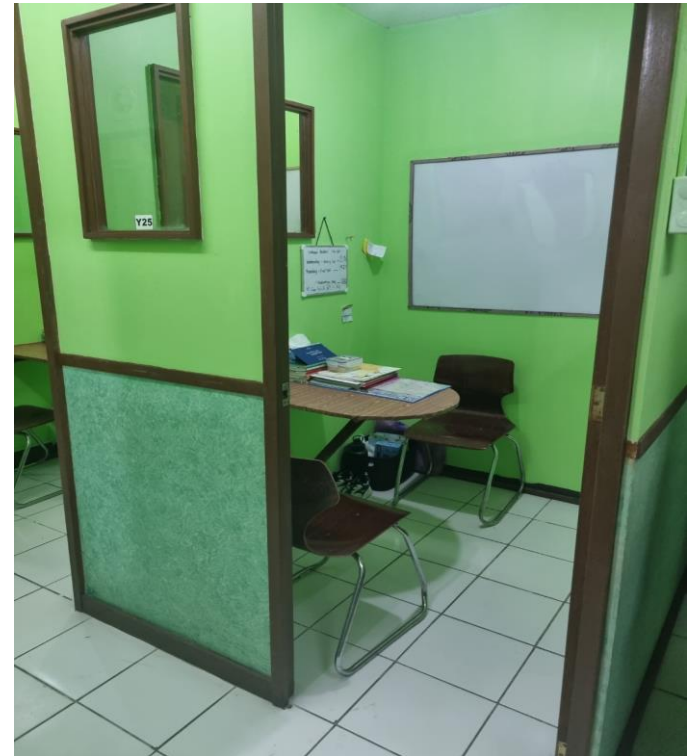
De La Salle Araneta University 교내 전경



[대학 정보]

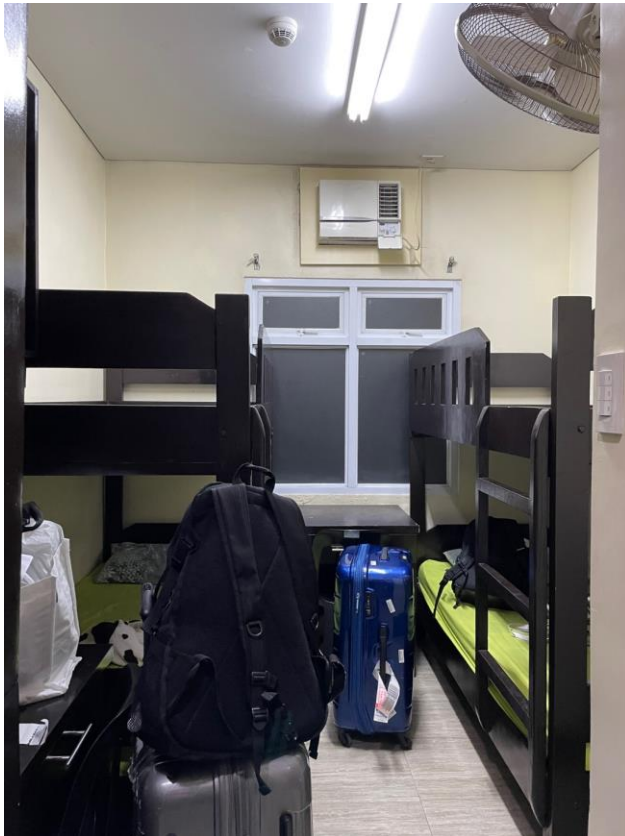
De La Salle Araneta University

De La Salle Araneta University 실내 (강의실)



[대학 정보] De La Salle Araneta University

Lasallian Language Center 기숙사



[대학 정보] De La Salle Araneta University



De La Salle 교육재단



DE LA SALLE ANDRES
SORIANO MEMORIAL
COLLEGE (DLSASC)

The De La Salle Andres Soriano Memorial College (DLSASC) is located in Lutopan, Toledo City, Cebu. The De La Salle Brothers have supervised the school through formal contracts and contacts or through its Board of Trustees. In July 2006, ASCM became an official part of the De La Salle Philippines network of schools.



DE LA SALLE ARANETA
UNIVERSITY (DLSAU)

De La Salle Araneta University (DLSAU) was established in 1946 as the Araneta Institute of Agriculture in Bulacan, then transferred to Malabon the year after. In 1978, it was renamed as the Gregorio Araneta University Foundation. In 2002, it became an official member of the De La Salle Philippines network of schools. The university specializes in Veterinary Medicine and Agricultural Sciences.



DE LA SALLE-COLLEGE OF
SAINT BENILDE (DLS-CSB)

De La Salle-College of Saint Benilde (DLS-CSB) started out as a community or night school for working students based in De La Salle University-Manila (DLSU-M). Under the leadership of the late Sr. Andrew B. Gonzalez FSC, the community school evolved into a dynamic institution that offered pioneering degree programs different from what regular universities and colleges had.



DE LA SALLE JOHN BOSCO
COLLEGE (DLSJBC)

De La Salle John Bosco College (DLSJBC) is located in Mangagay, Bislig City, Sanguay del Sur in the Philippines. It was established in 1963 by the Don Bosco Fathers, the administration and supervision of which was formally turned over to the De La Salle Brothers in 1977. In 1999, JBC was accredited by the La Salle Schools Supervision Office and in 2006, the school was officially accepted as a network school of De La Salle Philippines.



DE LA SALLE SANTIAGO
ZOBEL SCHOOL (DLSZ)

De La Salle Santiago Zobel School (DLSZ) was established on 29 March 1978 to meet the objective of moving the elementary department of De La Salle University to a more conducive and suitable learning environment with a high school department to assure grade school graduates of placement for secondary education. Located at the heart of Ayala Alabang Village, DLSZ answers the educational needs of southern Metro Manila for quality comprehensive basic education.



LA SALLE ACADEMY (LSA)

La Salle Academy (LSA) is a La Salle school located in Iligan City, Lanao del Norte, Philippines. It is the first of the third generation of La Salle schools. It is the third La Salle school in the country and the first La Salle school established in Mindanao.



LA SALLE COLLEGE
ANTIPOLO (LSCA)

La Salle College Antipolo (LSCA) is located in Antipolo City, Rizal, in the Philippines. It was founded by Br. Rolando Dizon FSC in 1986. LSCA caters to students from different parts of Rizal and Metro Manila.



LA SALLE GREEN HILLS
(LSGH)

La Salle Green Hills (LSGH) is the fifth oldest La Salle school in the Philippines. It is an exclusive school for boys located on Ortigas Avenue, Mandaluyong City, Metro Manila, Philippines. LSGH offers elementary education and secondary education.



DE LA SALLE MEDICAL AND
HEALTH SCIENCES
INSTITUTE (DLSMHSI)

The De La Salle Medical and Health Sciences Institute (DLSMHSI) is a full complement medical and health allied institution that provides holistic, excellent, and premium health professions education, health care, and research services in a nurturing God-centered environment. The Institute is composed of three major services division: Academics, De La Salle University Medical Center, and the DLSHSI Angelo King Medical Research Center; and two institutional divisions: Lasallian Mission and Linkages and Finance and Administration Divisions.



DE LA SALLE LIPA (DLSL)

De La Salle Lipa (DLSL) is a third generation school founded by the De La Salle Brothers in the Philippines. Established in 1962, the school is the fifth La Salle school and the first school in Southern Luzon.



DE LA SALLE UNIVERSITY-
DASMARIÑAS (DLSU-D)

De La Salle University-Dasmariñas (DLSU-D) was established on 18 July 1977 as a private nonsectarian tertiary school named General Emilio Aguinaldo College (GEAC) Cavite and managed by the Yaman Lahi Foundation in Dasmariñas, Cavite. It started with the Division of Health and Sciences with six faculty members and the Division of Arts and Sciences served by nine faculty members.



DE LA SALLE UNIVERSITY
(DLSU)

De La Salle University (DLSU) was established in 1911 by the Catholic teaching congregation Brothers of the Christian Schools, the first Lasallian school in the country. DLSU positions itself as a leader in molding human resources who serve the church and the nation. The University is a hub for higher education training renowned for its academic excellence, prolific and relevant research, and involved community service.



LA SALLE UNIVERSITY (LSU)

La Salle University (LSU), formerly Immaculate Conception College-La Salle, is located in O'ramu City, Misamis Occidental, Philippines. Originally opened in 1929 by the Society of Jesus in the Philippines, it was turned over to the De La Salle Brothers in the Philippines in 1994.



ST. JAIME HILARIO
SCHOOL - DE LA SALLE
BATAAN (SJSDBS)

St. Jaime Hilario School - De La Salle Bataan (SJSDBS) is a Lasallian co-educational primary and secondary school located in Bagac, Bataan, in the Philippines. It was opened in 2006 to cater to the less-fortunate community in that area of Luzon. The school's curricula aims to instill concern and consciousness for their community and the environment.



ST. JOSEPH'S SCHOOL-LA
SALLE (SJSLS)

St. Joseph's School-La Salle (SJSLS) was established in 1960 to accommodate the graduates of the Immaculate Conception Free School, a charitable primary school that was jointly run by the De La Salle Brothers and the Young Ladies' Association of Charity. It is the only Catholic school in the heart of Barangay Villamonte, with its population of thirty-four thousand inhabitants of whom eighty-four (84%) percent belong to the working class.



UNIVERSITY OF ST. LA SALLE
(USLS)

The University of St. La Salle (USLS) was established in 1952. A Catholic institution of learning offering to both men and women an educational program designed to develop their talents and abilities towards becoming truly contributing members of society, USLS is committed to a curriculum that emphasizes person-development as an integrated and holistic process of spiritual, social, intellectual and physical growth.

[프로그램 장단점]

필리핀 4주 De La Salle Araneta University

프로그램 장단점

단점	장점
<ul style="list-style-type: none">- 동남아 특성상 모던한 시설이 아닐 수 있음- 필리핀 영어에 대한 편견- (종교적 배경으로 인해) 복장 제한	<ul style="list-style-type: none">- 4주 기간 대비 저렴한 비용- 1:1 집중 수업, 해외취업 프로그램- 파견대학에서 강사 수준(퀄리티) 보장- 개인 역량에 따라 인턴ships을 통한 최대 학습효과



문의 : 글로벌교류센터

전화 : (033) 248-1346

이메일 : julianne.ban@hallym.ac.kr